



Magnets are the perfect portable tools to show your brand anywhere. They nicely display advertisement and logos.

We use flat soft magnet to accommodate color matches and photo finish requirements. They are made from offset printing paper and covered by a thin PVC coating.

We use PVC magnets in 2D and 3D styles to take your promotional campaigns to new dimensions.

Pins have always been popular for promoting special events. Used as collectable items or as give-aways, several manufacturing options are available for processing the pins, including the most popular brass, zamac and stainless materials.

Button Badges are usually worn to display an affiliation to a party, a club, a school, an association... They are effective and inexpensive eye catchers! You can choose from many different sizes to express your message in either screen printing or offset printing.

Our attachment for all your gifts, souvenir or promotional campaigns feature a range of tie clips and cufflinks in a diverse assortment of metals, designs and styles. All our clips and pins can be presented in a nice gift box.



IRON PIN SOFT METAL

PM 3501

IRON PIN SOFT ENAMEL
 Type: Iron Pin Soft Enamel
 Material: Iron
 Logo: Stamping
 Attachment: Butterfly clutch
 Packing: Individual polybag

Estimated Delivery: 15 to 25 days after artwork or prototype approval



PRINTING PIN

PM 361

PRINTING PIN
 Type: Printing Pin
 Material: Stainless
 Logo: Offset Printing
 Coating: Epoxy
 Attachment: Butterfly clutch
 Packing: Individual polybag

Estimated Delivery: 15 to 25 days after artwork or prototype approval



32 g

COLLECTOR CARD



BACK SIDE

BUTTON BADGES

PM 362

BUTTON BADGES (ON PAPER)

Type: Button Badges
Material: Front side paper
Logo: Offset on paper or on metal
Attachment: Standard brooch
Packing: Individual polybag



16 g



2 g

BUTTON BADGES (ON STAINLESS)

Type: Button Badges
Material: Stainless + light
Logo: Offset printing
Attachment: Flashing led & brooch
Packing: Individual polybag



8 g



9 g

STARFLEX BAGDES

PM 363

STARFLEX BADGES

Type: Starflex button badges
Material: PVC Starflex
Logo: Screen or offset printing
Colors: Up to 10 colors
Attachment: Adhesive pins
Packing: Individual polybag



Shipping information

STARFLEX BADGES 1,000 pcs / carton ; gross weight : 5 kgs / carton
carton dimensions : 41x33x32 cm

Estimated Delivery: 15 to 30 days after artwork or prototype approval

EVA MAGNETS

PM 340



12 g



5 g

MAGNET

Type: Magnet
Material: EVA foam + Magnet
Logo: EVA layers assembled
Packing: Individual polybag

Estimated Delivery: 15 to 25 days after artwork or prototype approval



9 g

FRONT SIDE



BACK SIDE

PVC MAGNET 2D AND 3D

PM 342



8 g



7 g



7 g



13 g



7 g



7 g



29 g

PVC MAGNET 2D & 3D

Type: PVC Magnet 2D & 3D
Material: Cloisonne PVC + Magnet
Logo: Molding
Packing: Individual polybag

Estimated Delivery: 15 to 25 days after artwork or prototype approval

MAGNETS STARFLEX WITH LIGHT

PM 9011



8 g



9 g

FRONT SIDE



BACK SIDE



10 g



7 g

MAGNETS STARFLEX WITH LIGHT

Type: Magnet With Light
Material: PVC Starflex + light
Logo: Screen or offset printing
Colors: Up to 10 colors
Packing: Individual polybag

Shipping information

MAGNET STARFLEX WITH LIGHT 750 pcs / carton ; gross weight : 8 kgs / carton
carton dimensions : 41x33x32 cm
Estimated Delivery: 12 to 25 days after artwork or prototype approval

EMBLEMS



PM 912 / 82 g

IRON SOFT ENAMEL



PM 913 / 24 g



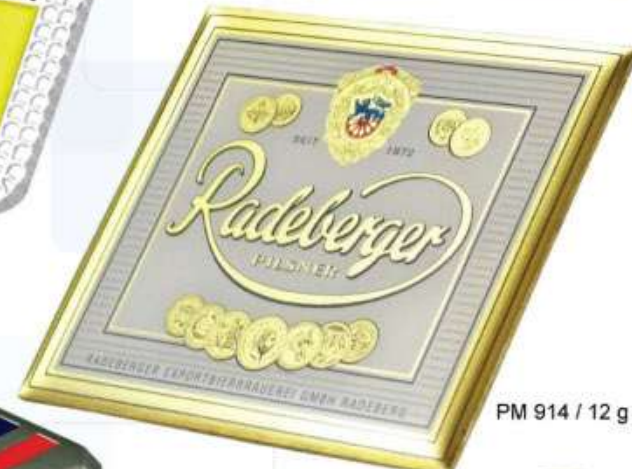
PM 911 / 52 g

ZAMAC RESIN ENAMEL



PM 915 / 16 g

ZAMAC RESIN ENAMEL



PM 914 / 12 g

STAINLESS PRINTING



PM 918 / 22 g



PM 916 / 17 g



PM 917 / 24 g

EMBLEMS

Type : 2D emblems
Material : Zamac
Logo : Resin enamel
Packing : Individual polybag

Estimated Delivery: 15 to 25 days after artwork or prototype approval

MEDALS

MEDALS

Type: PIN 2D medals
Material: Zamac
Logo: Soft enamel
Packing: Individual polybag



PM 903 / 83 g



PM 906 / 13 g



PM 905 / 88 g



PM 904 / 51 g



PM 907 / 23 g

Front side ↓



PM 371 / 51 g

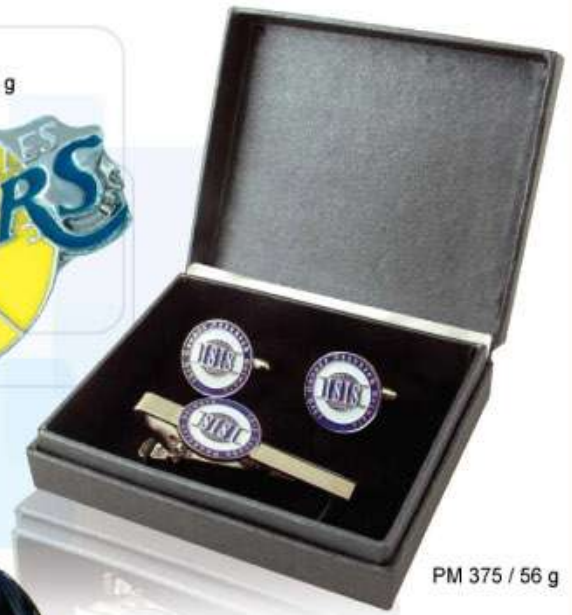
Back side ↓



PM 373 / 12 g



PM 374 / 12 g



PM 375 / 56 g



PM 372 / 20 g



CUFFINK & TIE CLIP

Type : 2D Cuffink & tie clip
 Material : Brass
 Logo : Resin enamel
 Packing : Individual polybag

Estimated Delivery: 15 to 25 days after artwork or prototype approval

ATTACHMENTS

<p>B15 15 mm</p> <p>B17 17 mm</p> <p>B20 20 mm</p> <p>B26 26 mm</p> <p>B33 33 mm</p>	<p>SB16 16 mm</p> <p>SB20 20 mm</p> <p>SB22 22 mm</p> <p>SB30 30 mm</p> <p>SB33 35 mm</p>	<p>TBS51 51 mm</p> <p>TBL55 55 mm</p> <p>TBS58 58 mm</p>	<p>PC</p> <p>BC</p> <p>LCR</p> <p>LC</p> <p>EA</p> <p>EH</p>
<p>LCRC</p>	<p>P36 36 mm</p> <p>P48 48 mm</p>	<p>EA</p>	
<p>MC 50 mm x 25 mm</p>	<p>P10S 10 mm</p> <p>P12 12 mm</p> <p>P7 7 mm</p> <p>P10 10 mm</p> <p>P14 14 mm</p>	<p>ACT</p> <p>SC</p>	<p>SZ30 30 mm</p> <p>SZ25 25 mm</p> <p>SZ20 20 mm</p> <p>MZ20 20 mm</p>